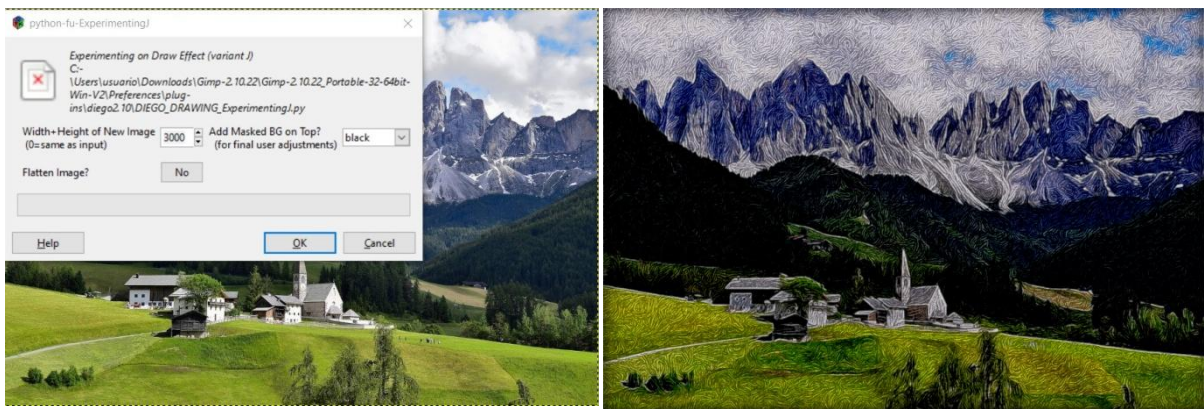


Draw Effect J filter created by Diego Nassetti, really produces fantastic results as a nice drawing style that can be applied to so many different images.

Most of the pictures are perfect for this style. But for portraits or delicate images maybe that the final effect was a bit hard. Diego solved this matter by creating different options to apply.

Doing my tests, I can explain a bit about how to get better of the possibilities with this filter. So I've written a short guide as orientation: For pictures **in general**, you can use the **Black Mask** option with Flatten Image **No**

Run the filter. When you get the result, you will see the upper layer with a black Mask at layer mode Normal. Surely, the result will be really cute. Only if you find the result a bit too dark, you can play with layer modes. The best options are Screen or Lightness. But before you must change the black mask to gray by selecting the black mask and fill it with a uniform gray.

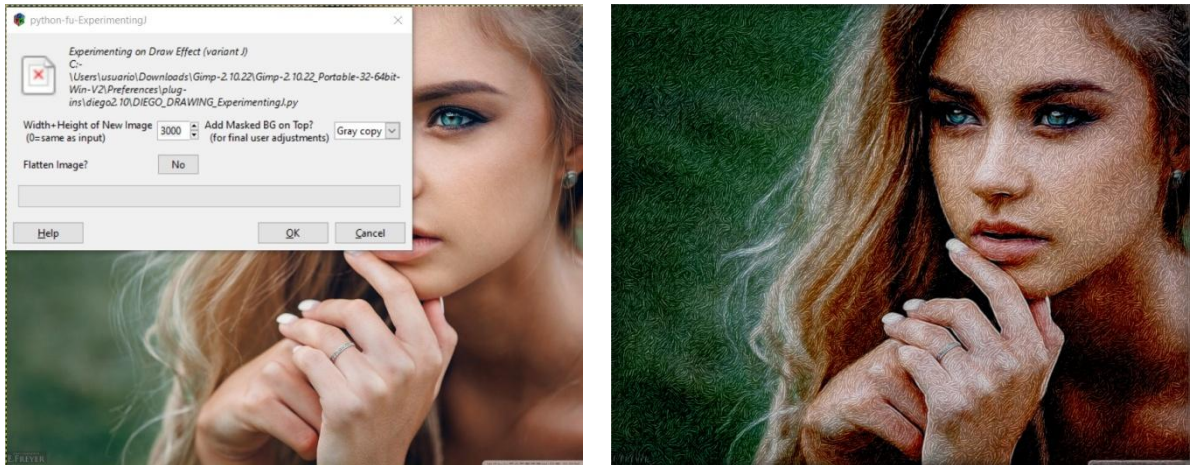


Example: The result on the right is very nice but I like it was a bit lighter. Then I fill the black mask with medium gray and set the layer mode to Screen Mode.



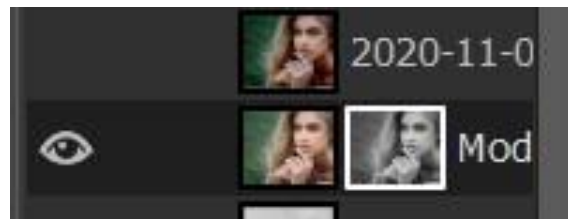
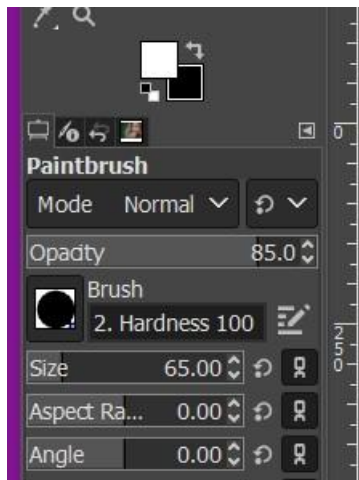


For pictures **with people**, mainly **portraits or fine pictures**, the best option is to use **Gray Mask** option with Flatten Image **No**

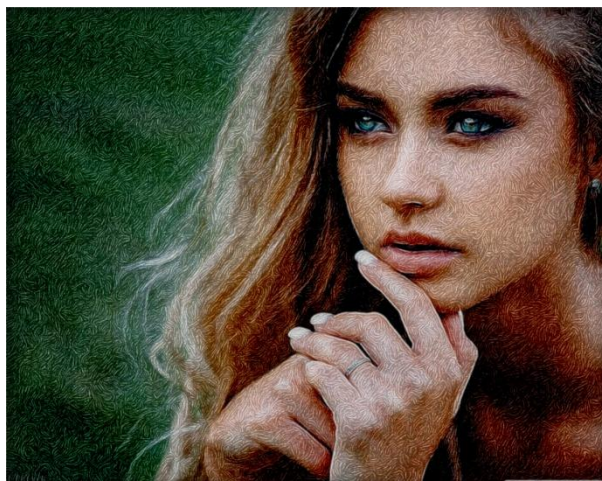


Run the filter. You will see the upper layer with a Gray Mask at layer mode Normal. Surely you will find a nice delicate effect on the image. But you can get even a more delicate effect if you paint on the mask with normal brush in White Colour on the finest parts of the image. Adjust the opacity too. My best results are between 80 or 90 % of opacity.

Set foreground colour at White and select Hardness 100 brush with opacity 85%. Go to select the gray mask and paint on it the most delicate parts of the image.

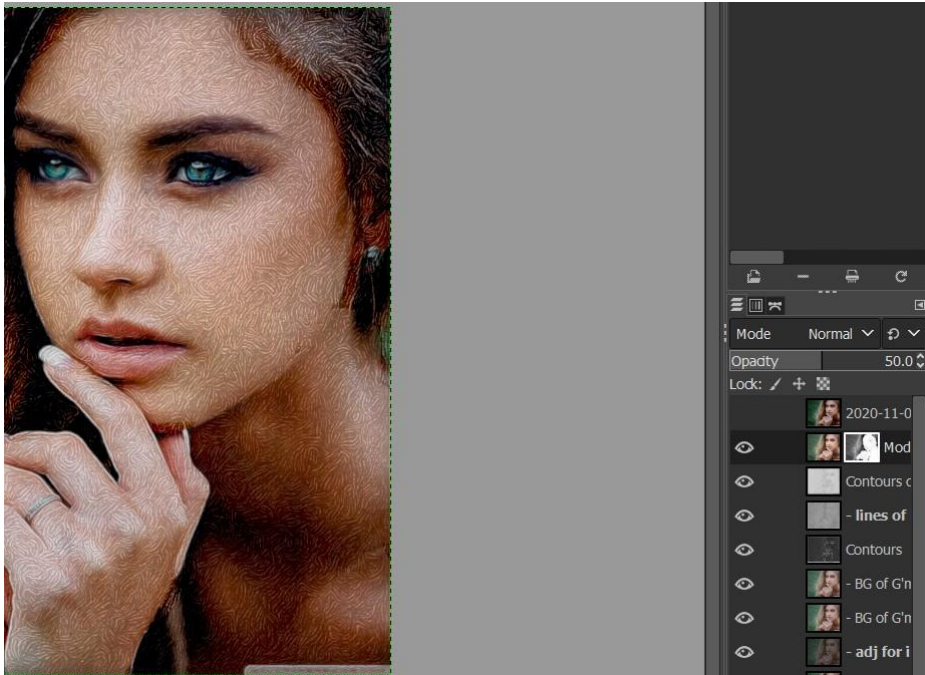


Result:



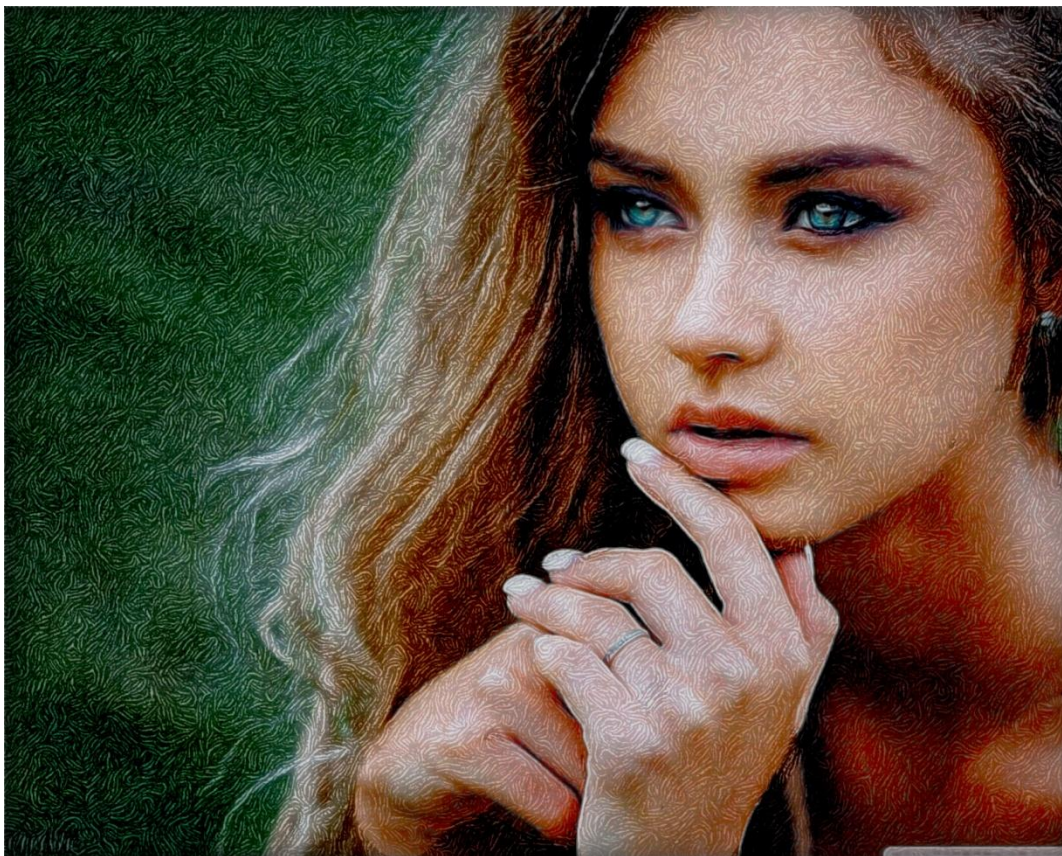


Painted with brush in white on her face:



Play with different opacities, too.

Changed the layer to Lightness Layer Mode.



Also, if the user wants to play and experiment about both types of pictures, views or people, there are possibilities to give or apply on gray mask with other different intensities of gray colours. Just to get the best result to the user's own taste.