

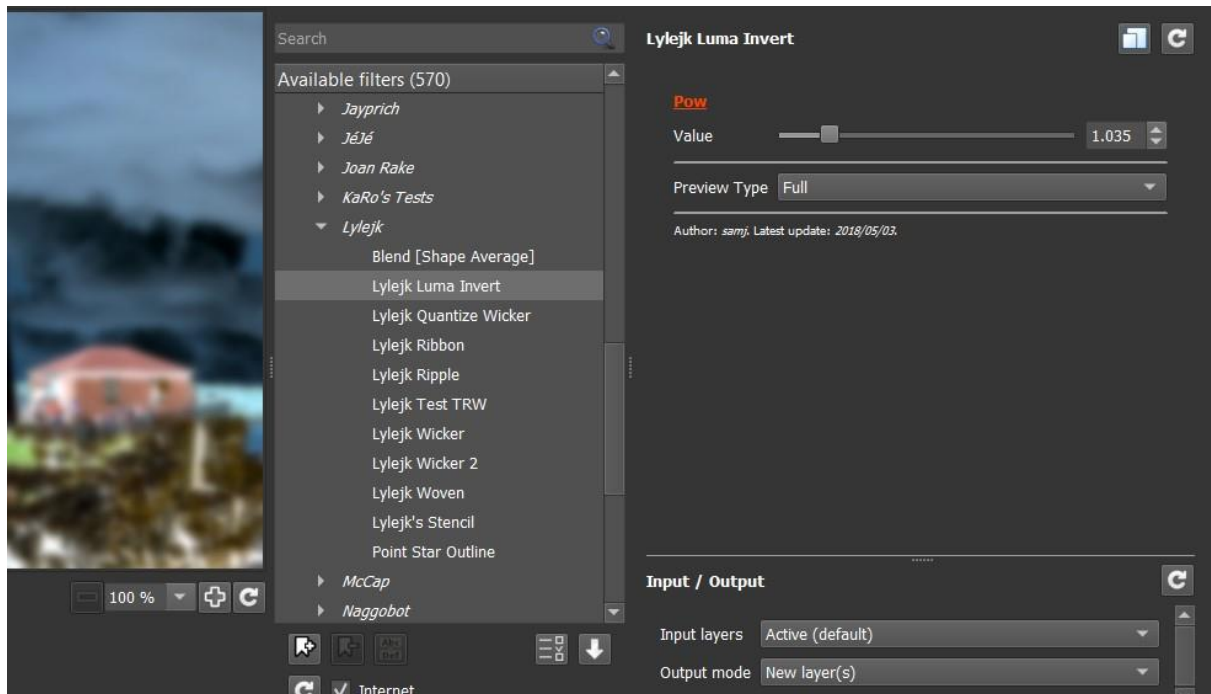
Graphic_Illustration_Tutorial

Open your image and duplicate it twice.

Go to Filters – Blur – Gaussian Blur and set it 3.50



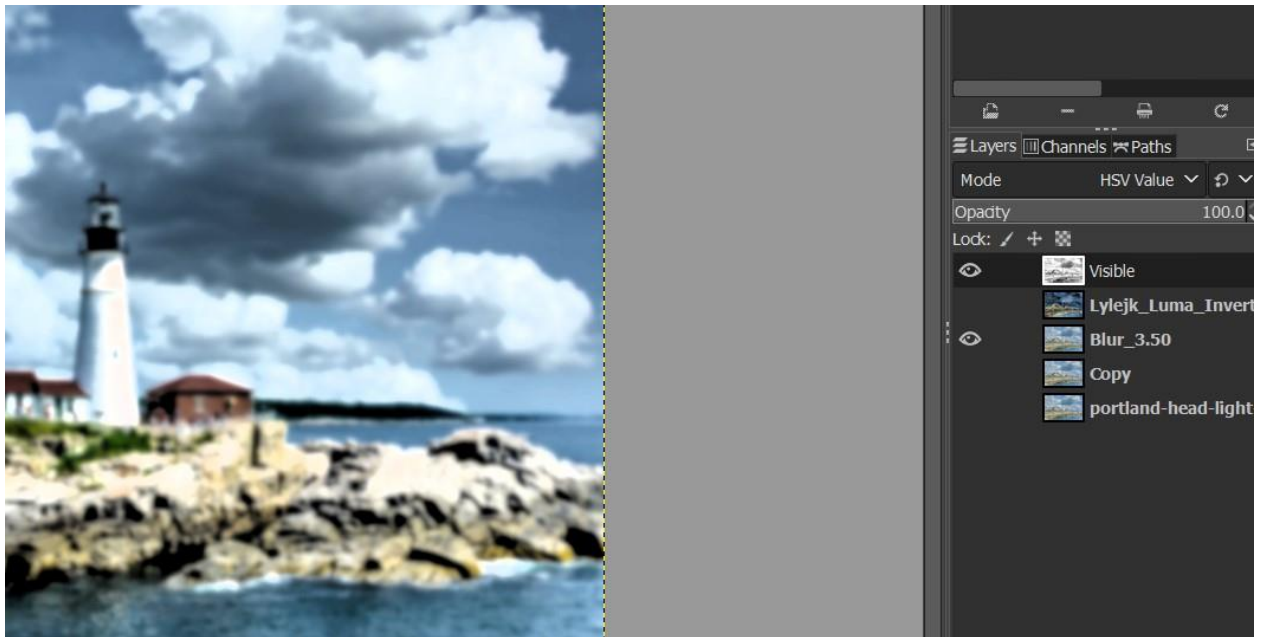
Select Blurred Layer, go to Filters- Gmic – Testing – Lylejk – Luma Invert
Lylejk_Luma_Invert 1.035,0 and set the layer at Grain Extract



New from Visible.

Close eye at lylejk Luma Invert Layer.

Set New from Visible layer at HSV Value Mode

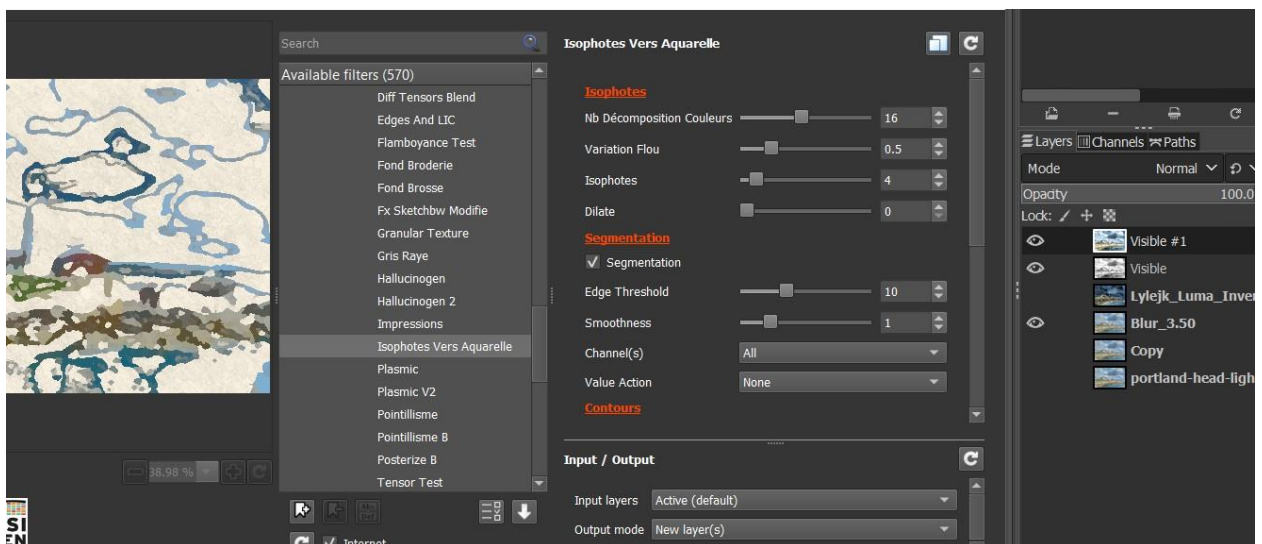


New from Visible (1)

Go to Gmic _ Testing – Samj – Artistic – Isophotes Vers Aquarelle

samj_Isophotes_Vers_Aquarelle

16,0.5,4,0,1,10,1,0,0,0,0,1,10,10,4,3,251,237,206,1



Set the new layer at HSV Value Mode and 70% opacity



New from visible (2)

Set your image orriginal copy below Visible 2

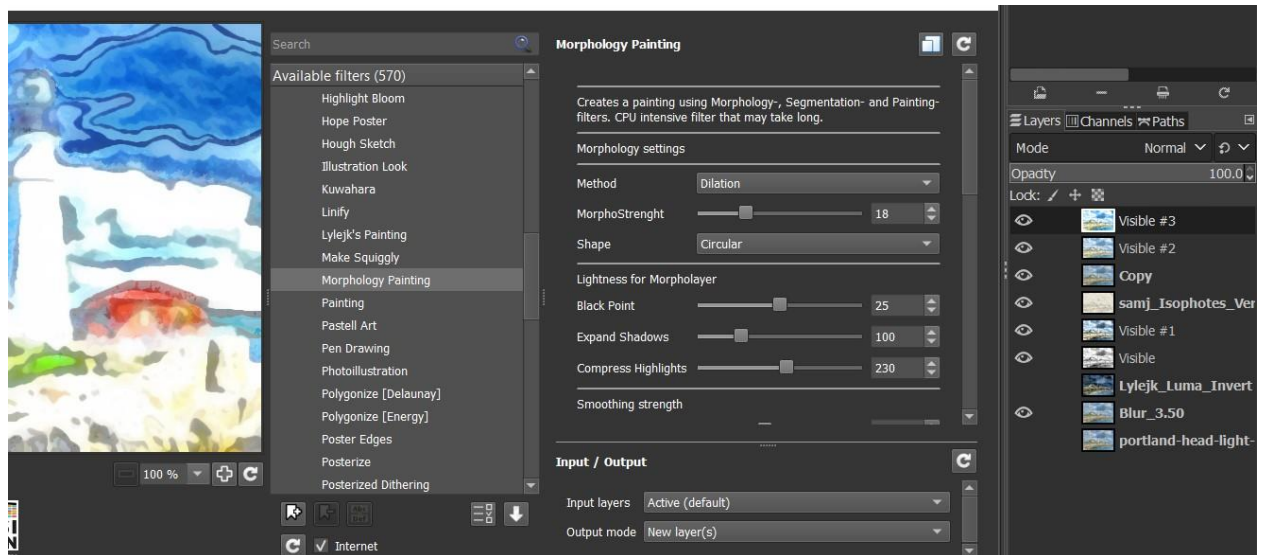
Set Visble 2 layer at Grain Merge Mode



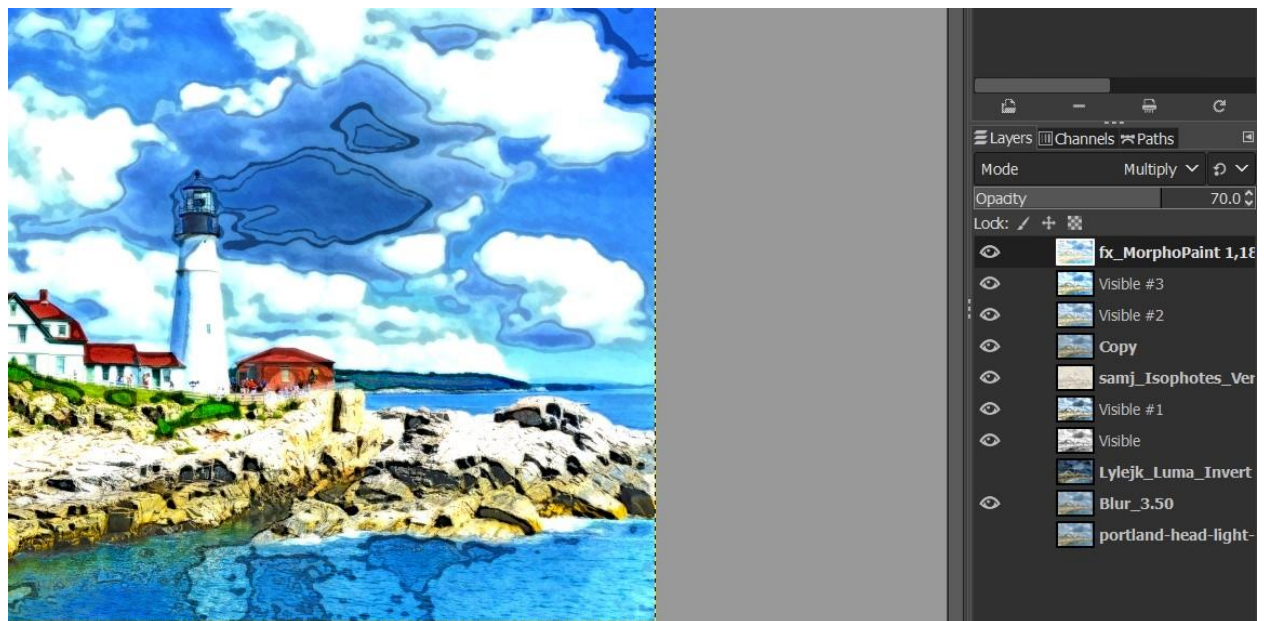
New from Visible 3

Go to Gmic – Artistic – Morphology Painting (default Values)

fx_MorphoPaint 1,18,2,25,100,230,8,3,4,0.5,2,0.5,200,1,1,1,1,1,1,1,1,0

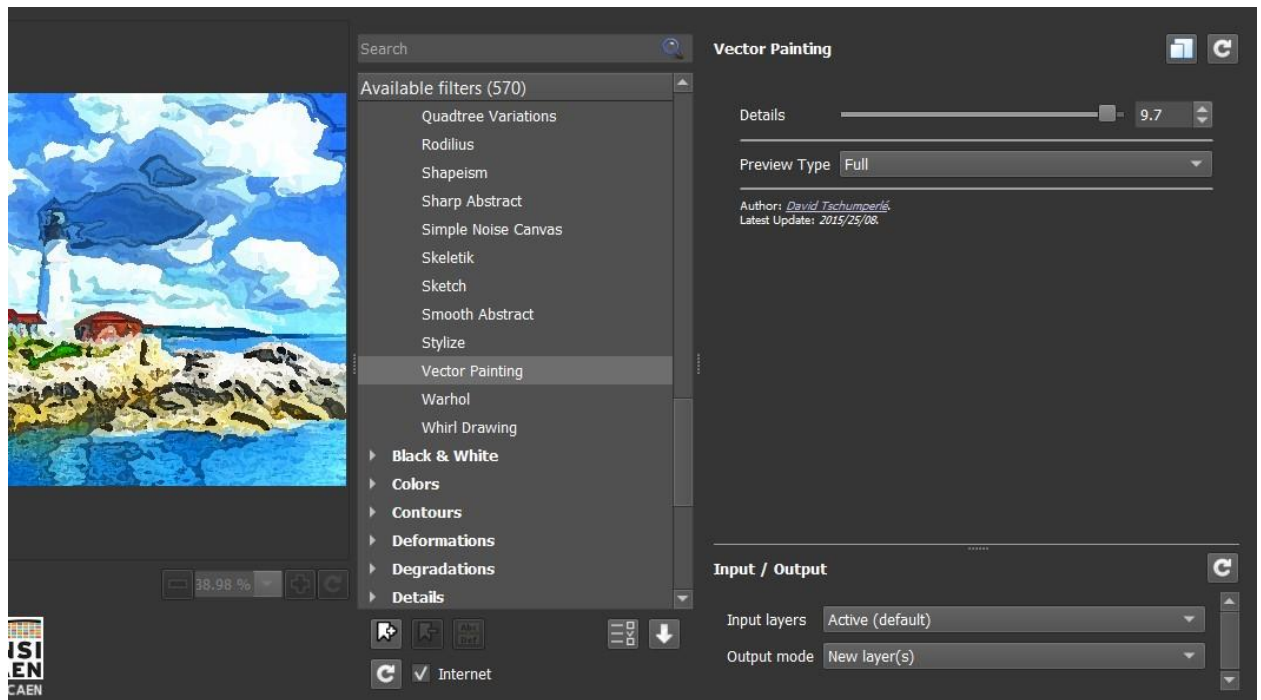


Set the new layer at Multiply Mode and 70% opacity

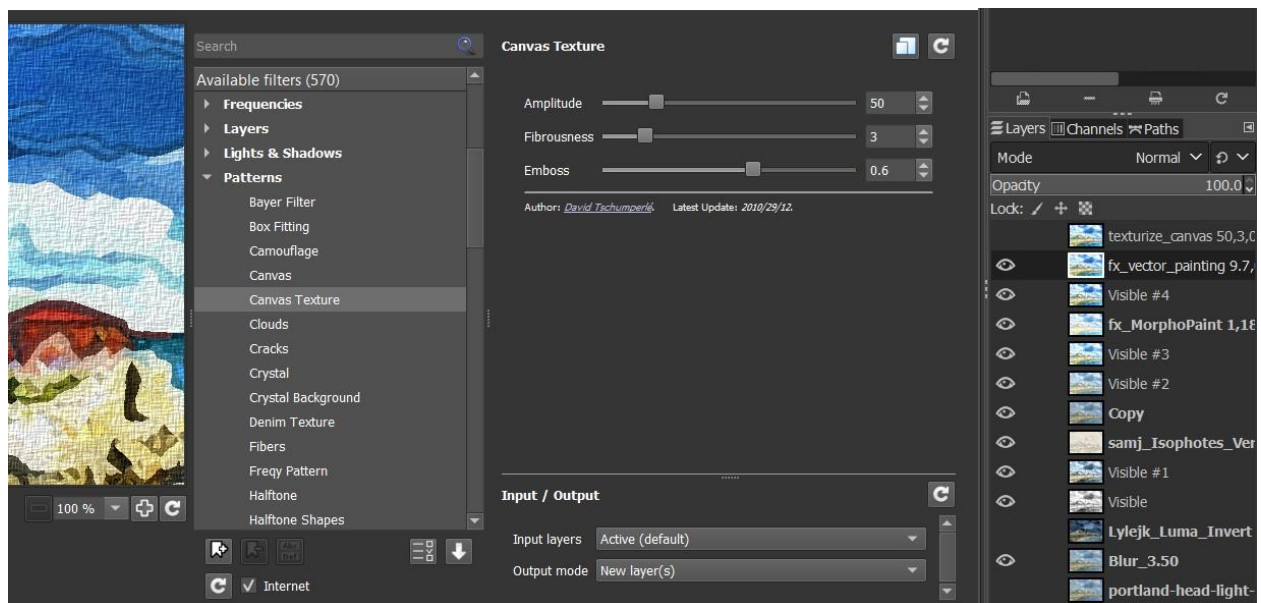


New from visible 4

Go to Gmic – Artistic – Vector Painting. fx_vector_painting 9.7,0,50,50



Go to Gmic – Patterns – Canvas Texture

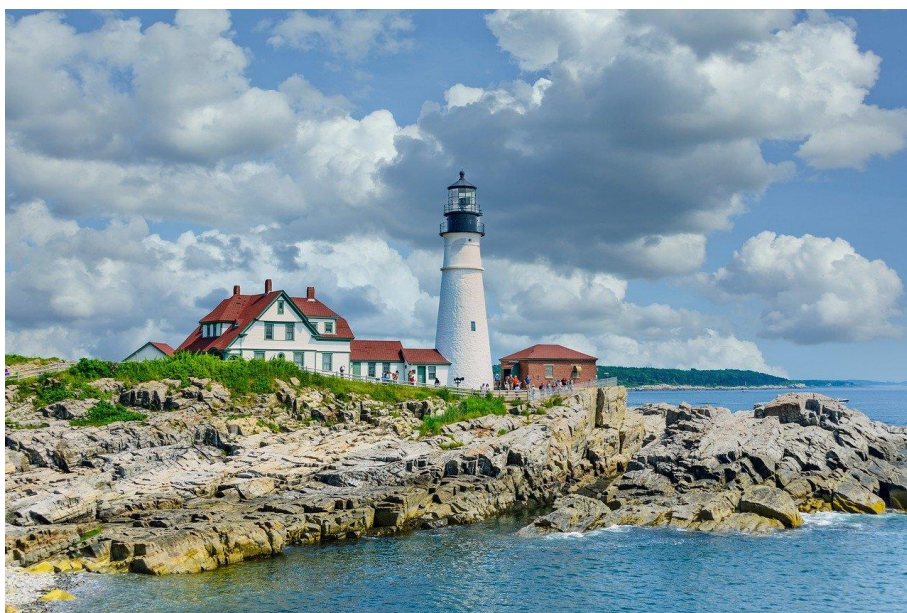


texturize_canvas 50,3,0.6

Final Result



Original



Enjoy the process

Issa,