

Graphic_Pencil_Effect

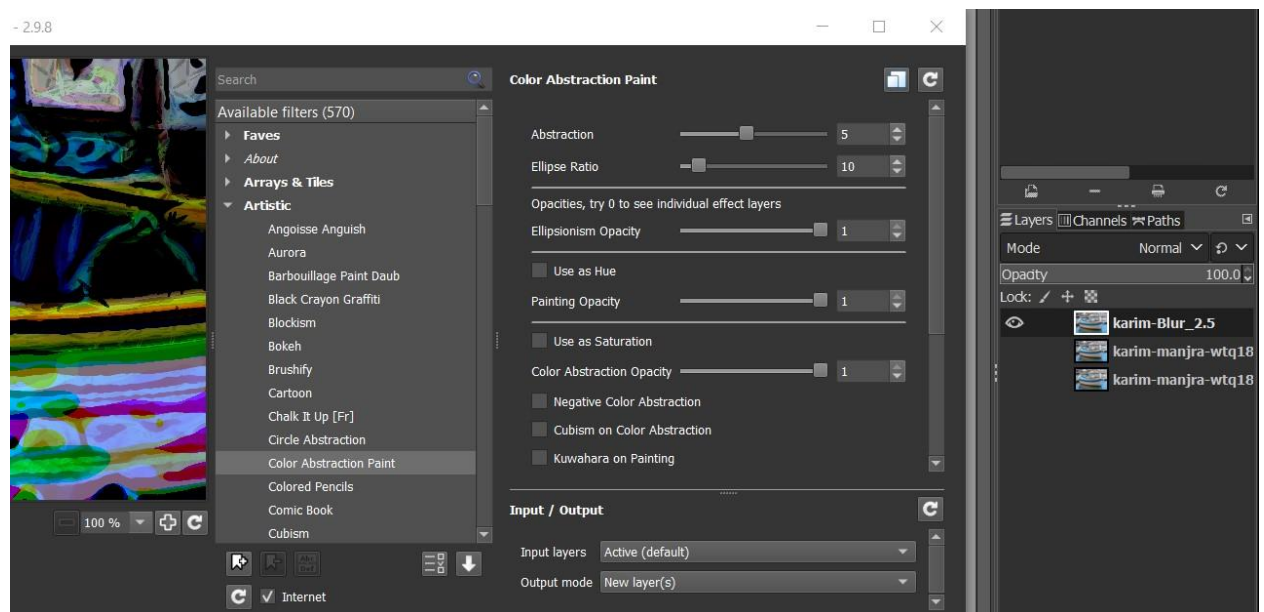
Open your image and duplicate it twice.

Close eyes to the layers except the upper one.

Go to Filters – Blur – Gaussian Blur at 2.5 OK

Select the Blur Layer and go to Filters – Gmic – Artistic - Color Abstraction Paint. Apply those values to a new layer.

fx_ColorAbstractionPaint 5,10,1,0,1,0,1,0,0,0,0,0,0



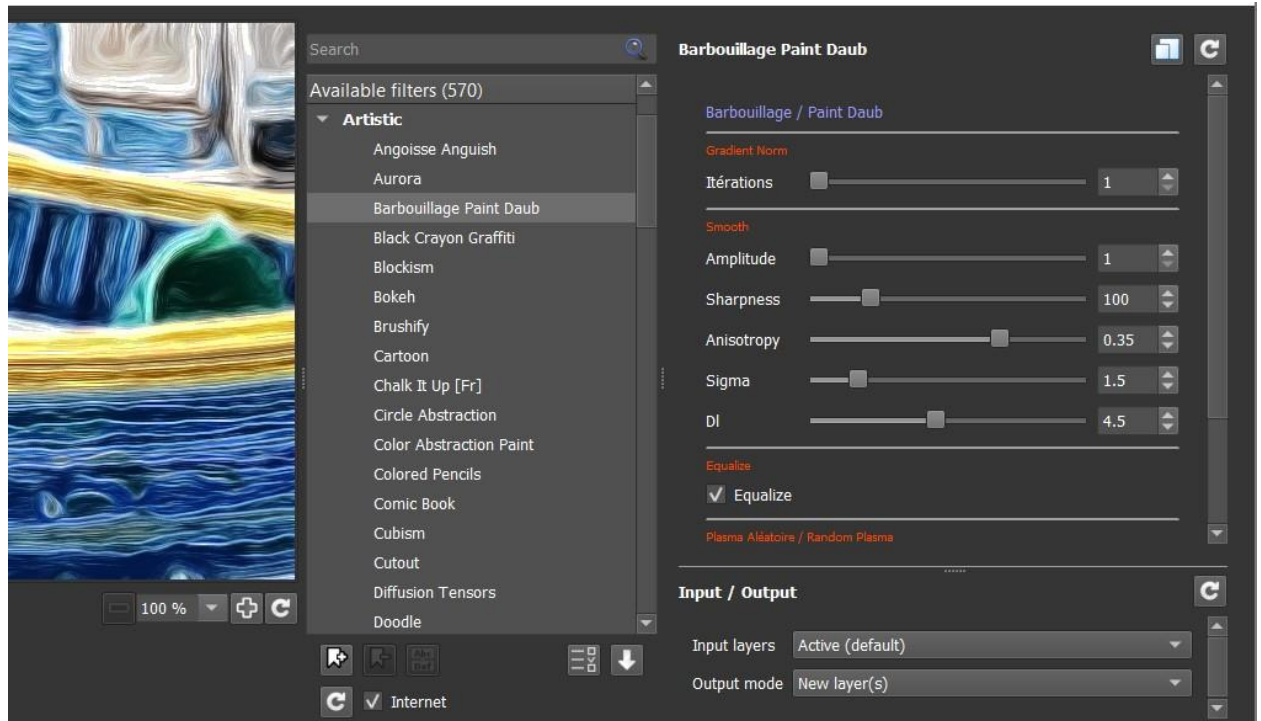
Set the new layer at Soft Light Mode and 60% opacity



New from Visible

Go to Gmic – Artistic – Barbouillage Paint Daub.

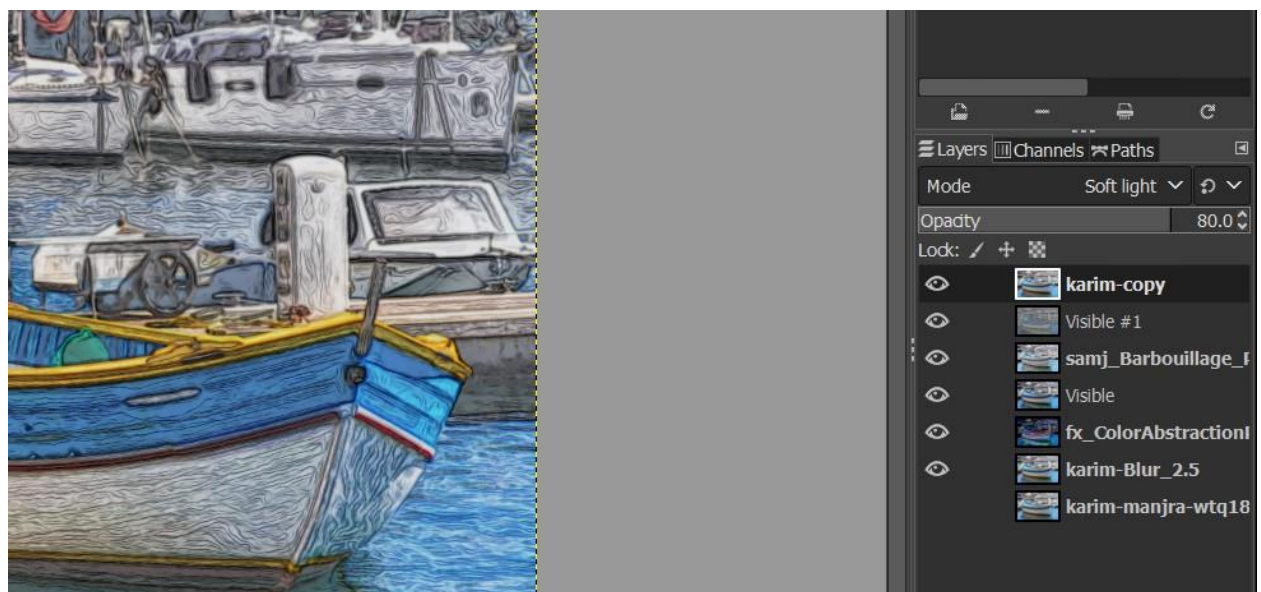
samj_Barbouillage_Paint_Daub 1,1,100,0.35,1.5,4.5,1,0,8



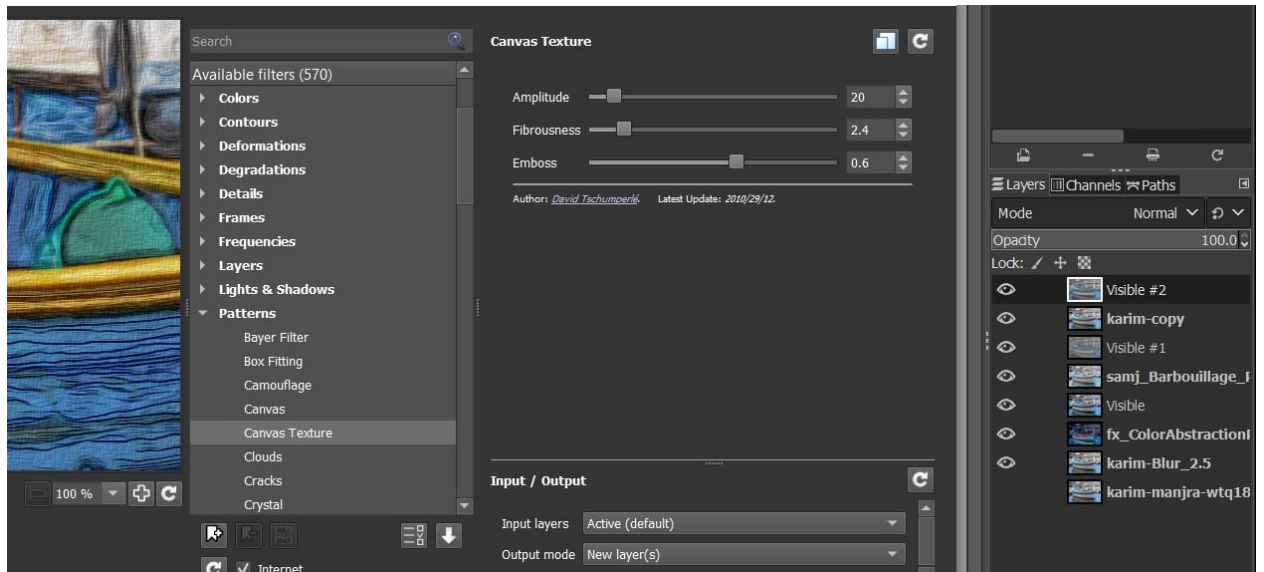
Set the new layer at Grain Extract and 80% opacity

New from Visible

Select an original copy image and set it upper the layers. Set the image copy layer at Soft Light and 80% opacity.



New from Visible



texturize_canvas 20,2.4,0.6

Set texturize canvas layer at Hard Light Mode. Low opacity if necessary.

Sometimes it's necessary to set the upper layer at Dodge Mode.

Final Effect



Enjoy the process

Issa