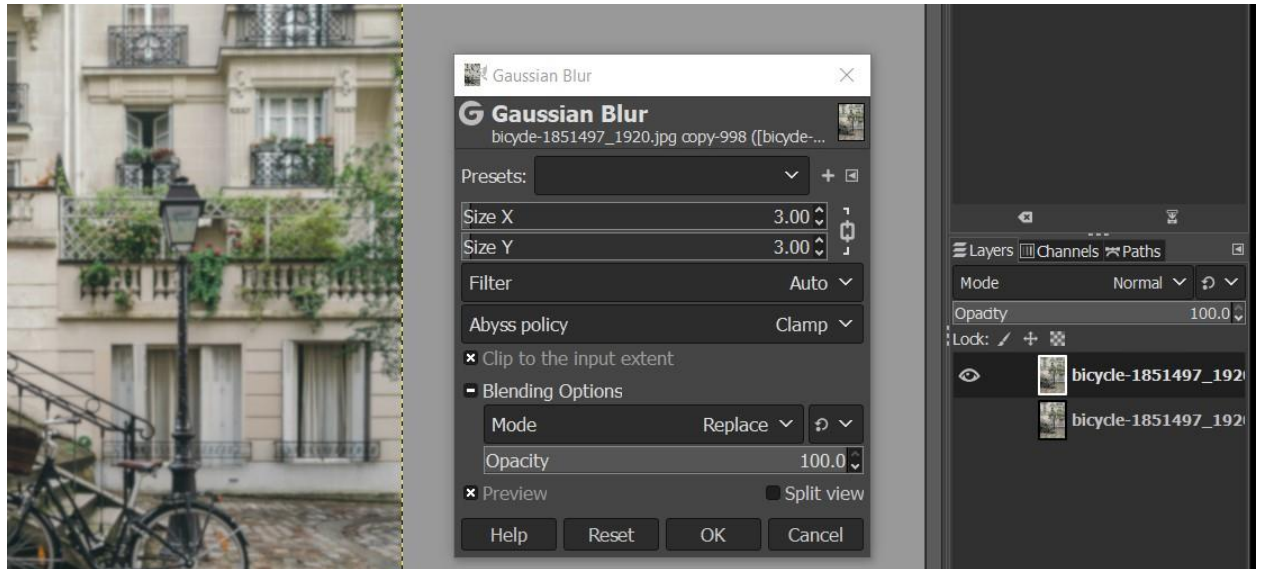


Graphic Fantasy Effect

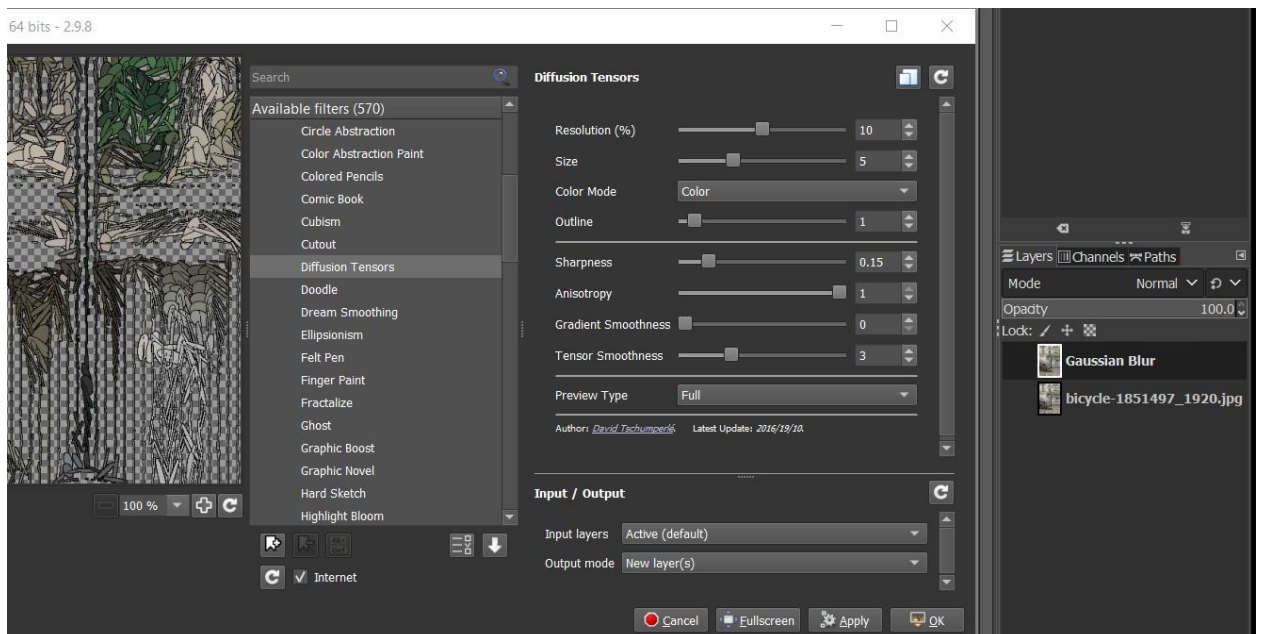
Open your image and duplicate it.

Go to Filters – Blur – Gaussian Blur. X & Y value 3 accept.



Select blur layer, go to Filters – Gmic – Artistic – Diffusor Tensor.

fx_diffusortensors 10,5,3,1,0.15,1,0,3,0,50,50



Select the new layer, go to Gmic – Artistic – Graphic Novel.

fx_graphic_novelfxl

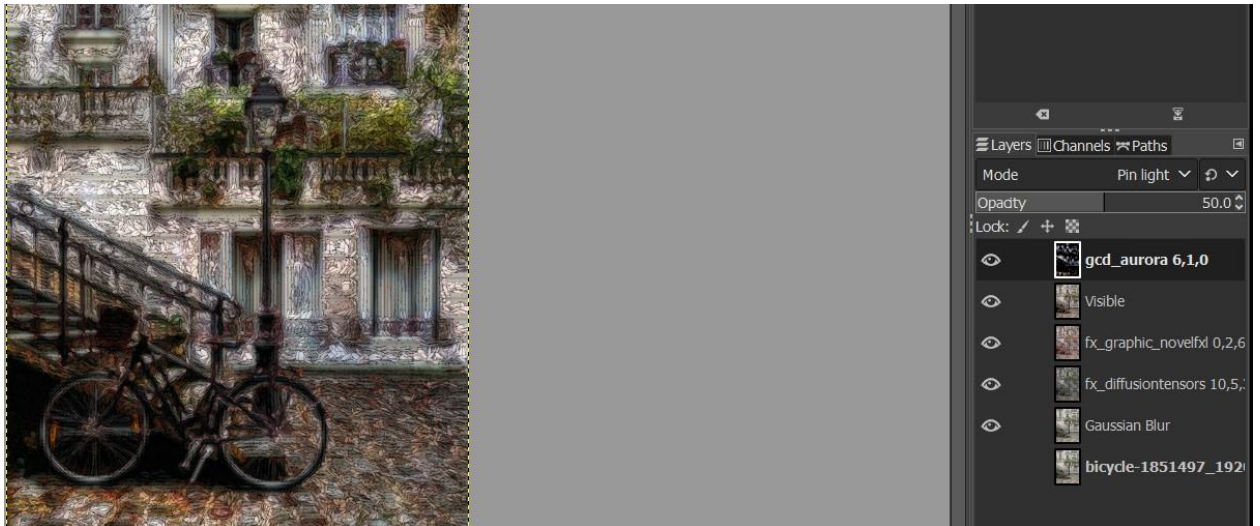
0,2,6,5,20,0,0.62,14,0,1,0.5,0.78,1.92,0,0,0,1,1,1,0.5,0.8,1.28

Set the new layer at Soft Light

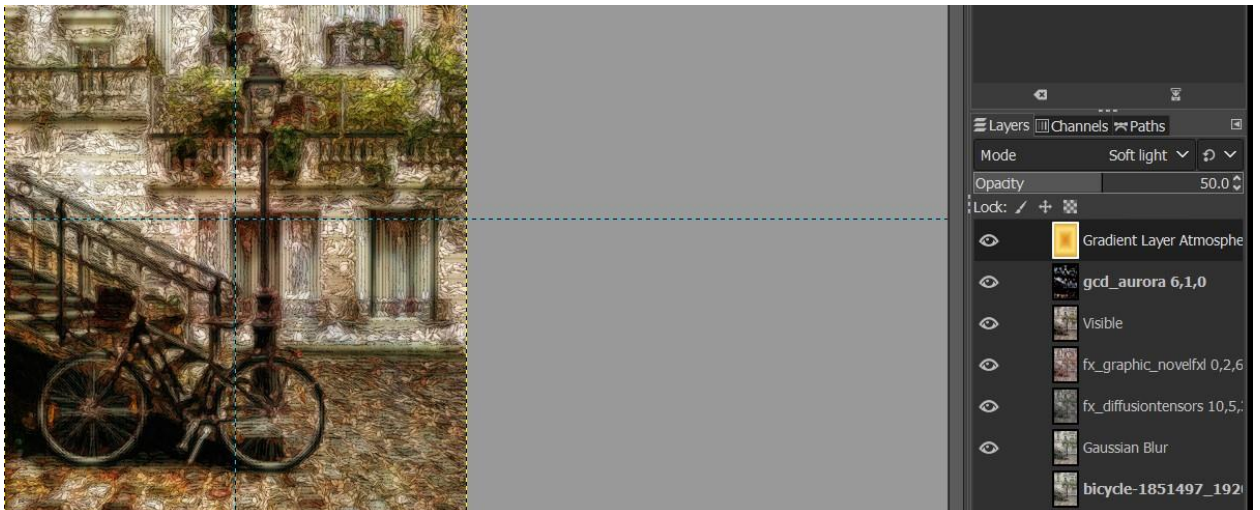
New from Visible

Go to Gmic – Artistic Aurora. Set the new layer at Pin Light and opacity 50%

gcd_aurora 6,1,0



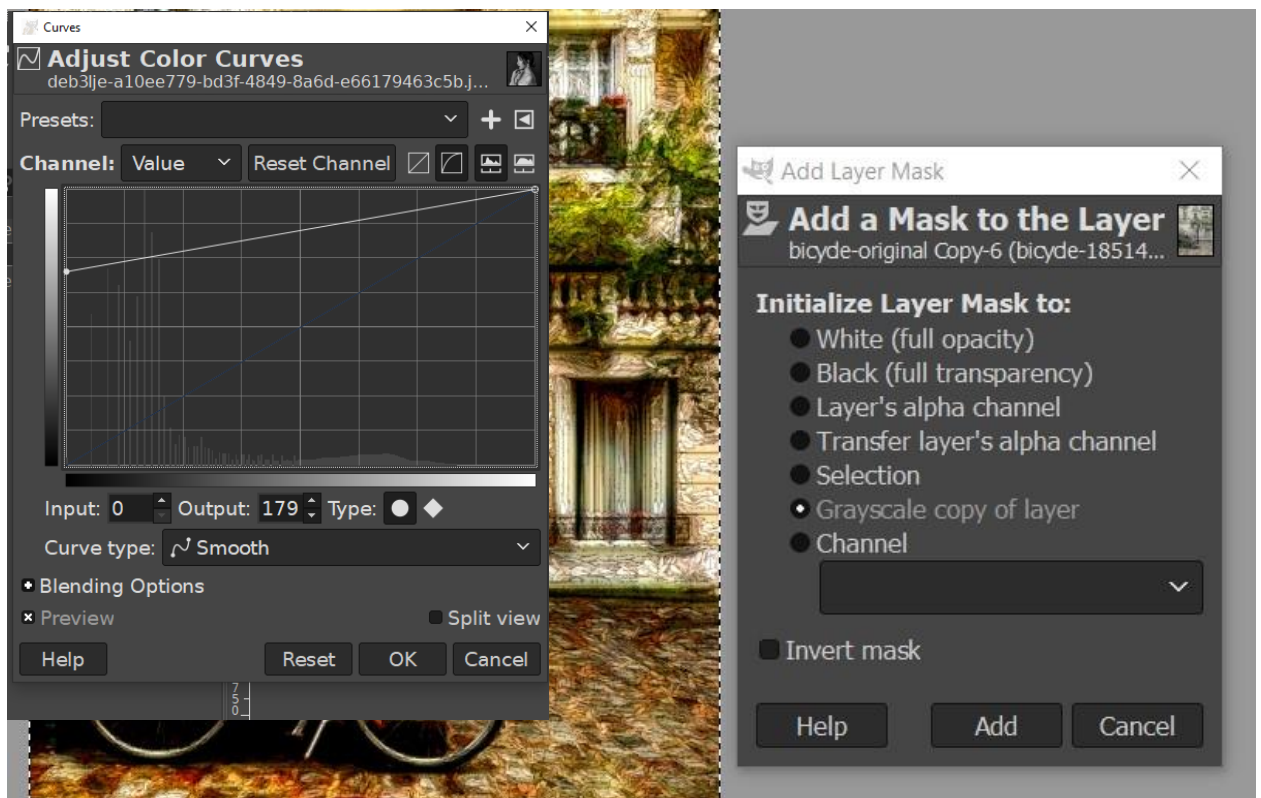
Create a new layer in transparency. Select Gradient tool. Select Atmospheric Gold Basic. Shape Square and apply since the centre of the layer. Set guides (Crosshair Guides). Set opacity at 50% and set it at Soft Light Mode



Remove guides. New from Visible.

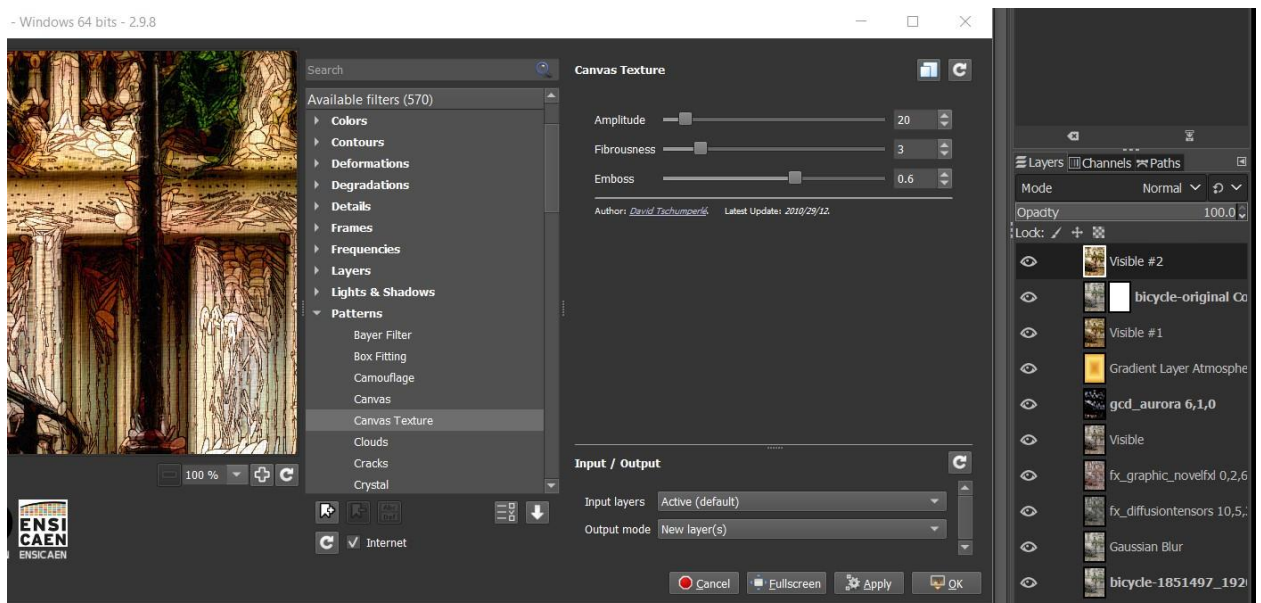
Set an original image copy at the top layers and add a mask layer. Choose the Grayscale copy of layer, option. Set the layer at Grain Merge and 75 % opacity.

Select the layer and apply a color curve: about 179 Output



New from visible

Go to Gmic – Patterns – Canvas Texture. `texturize_canvas 20,3,0.6`



Final Look (you can always adjust luminosity with color curves)



Enjoy the process

Issa