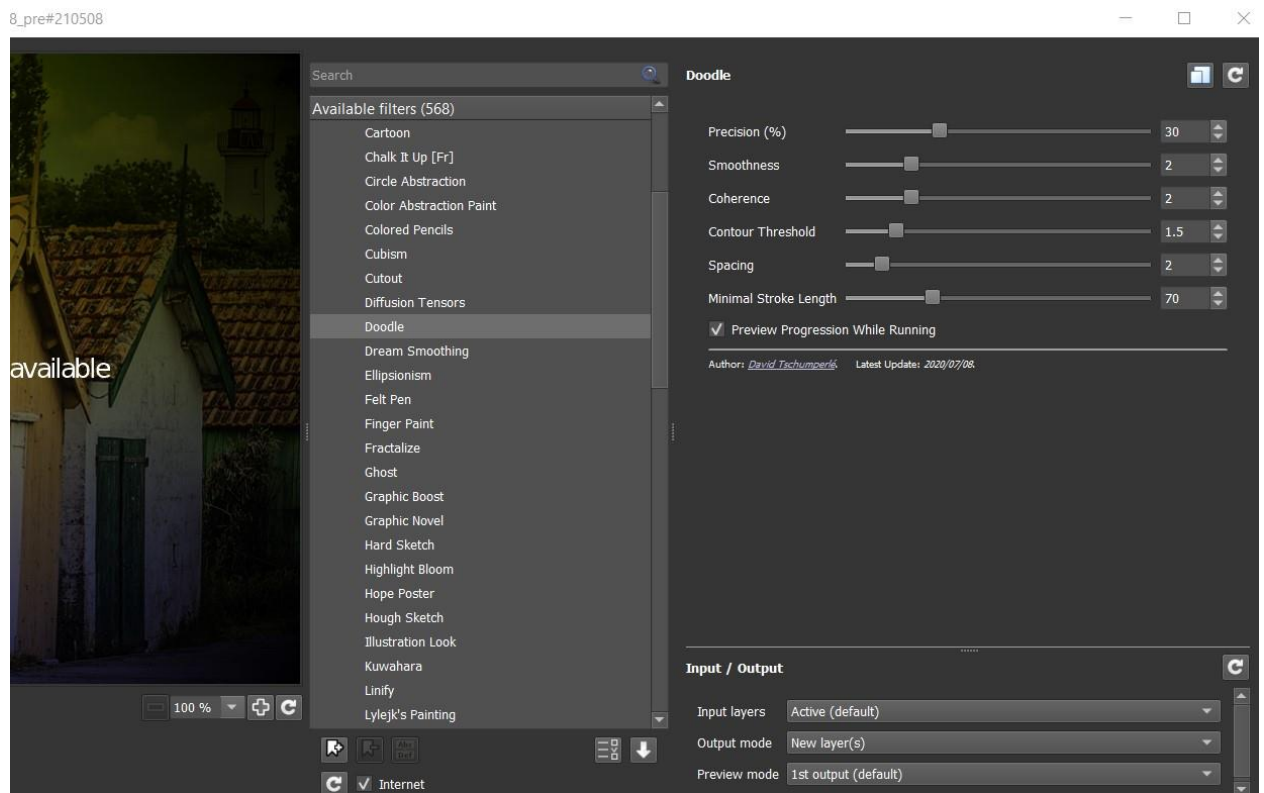


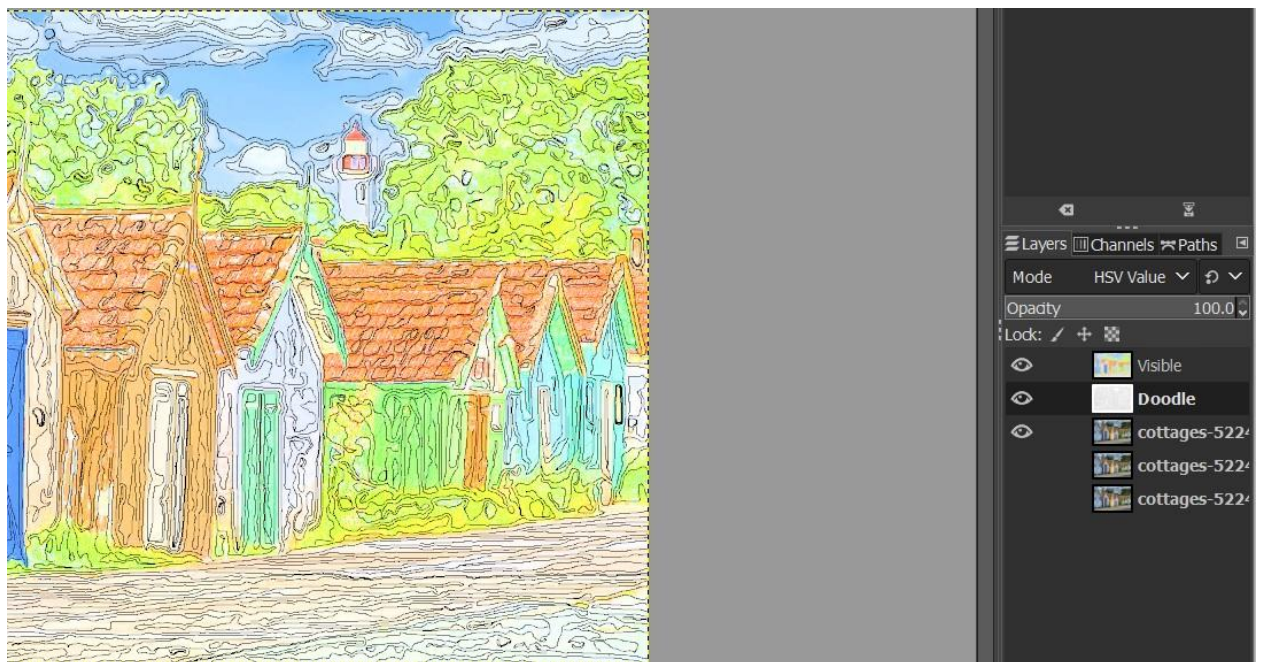
## Doodle\_Draw\_Lylejk's painting\_Graphic Effect

Open your image, not too big, which should be (width + height) <3000 size.

Duplicate it twice. Go to GMIC – Artistic – Doodle. Run with default values. Output to a new layer.

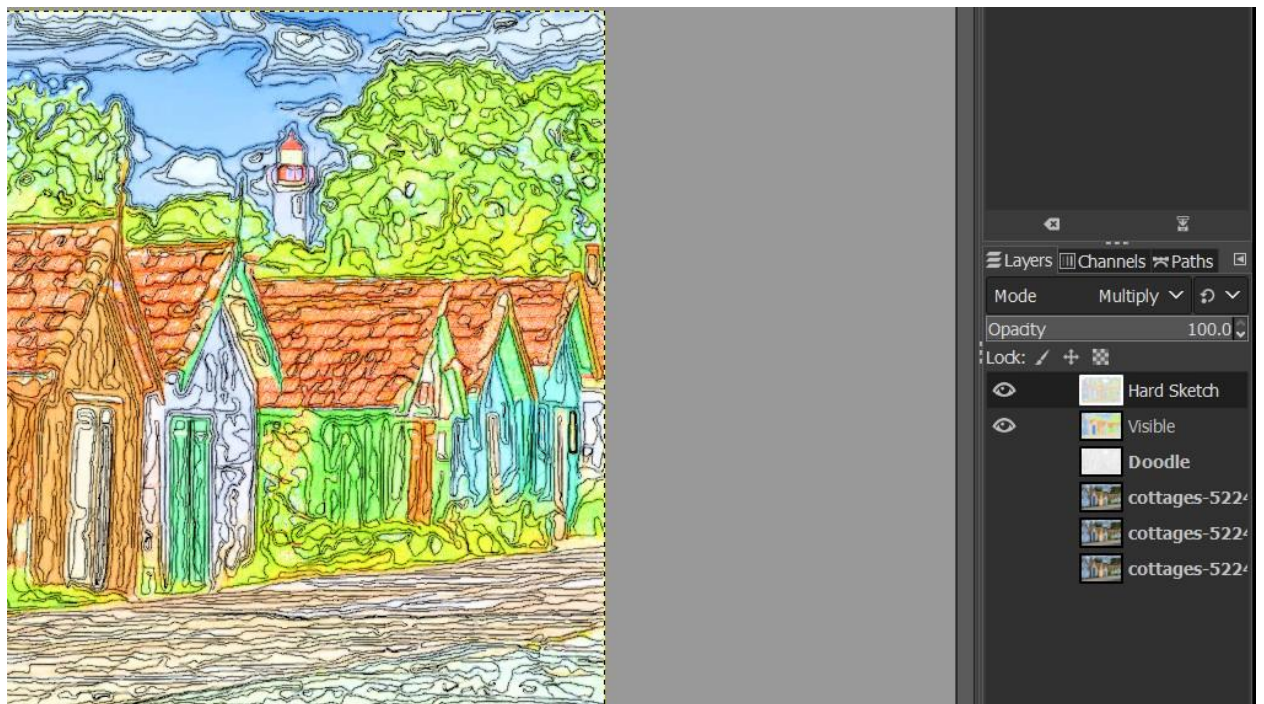
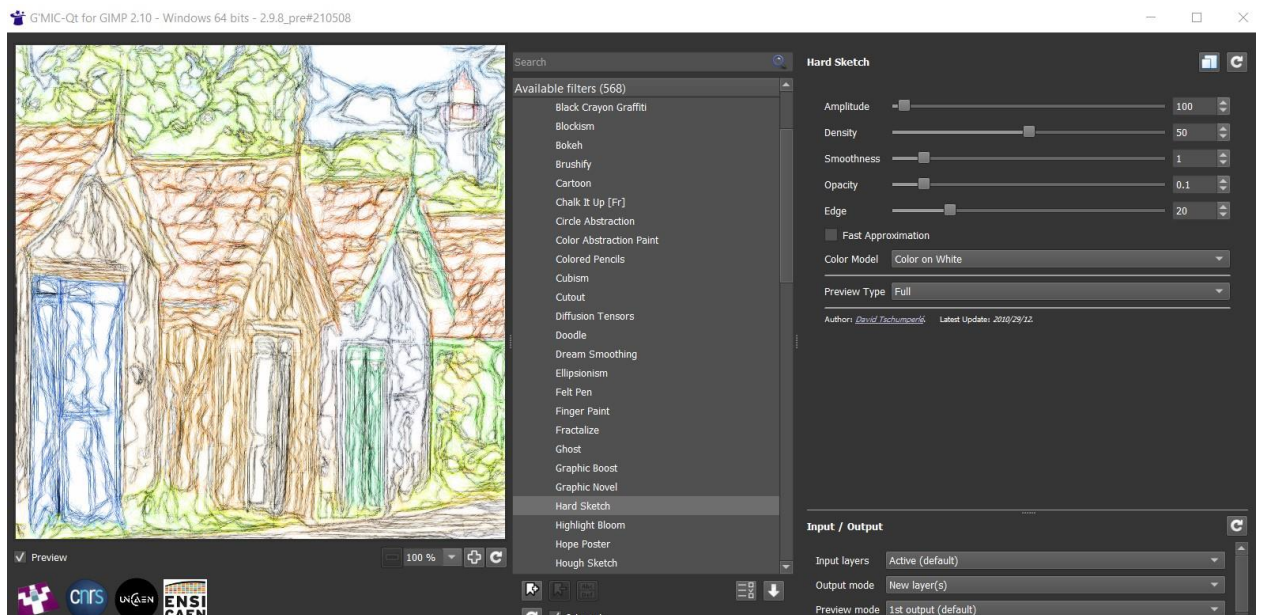


## Set Doodle layer at HSV Value



New from Visible

Go to Filters – Gmic – Artistic – Hard Sketch with default values. Output to a new layer. Set the layer to Multiply.



New from Visible

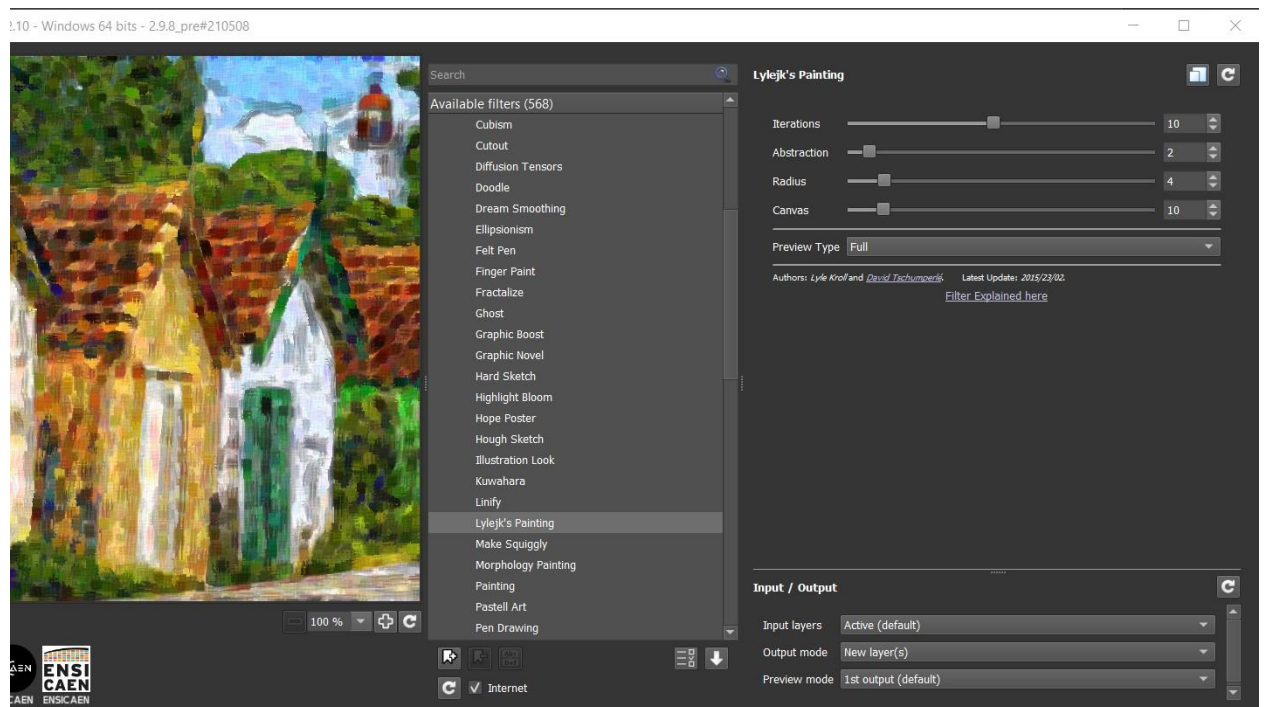
Set an original image copy upper the whole layers. Set the copy layer to Hard Light.





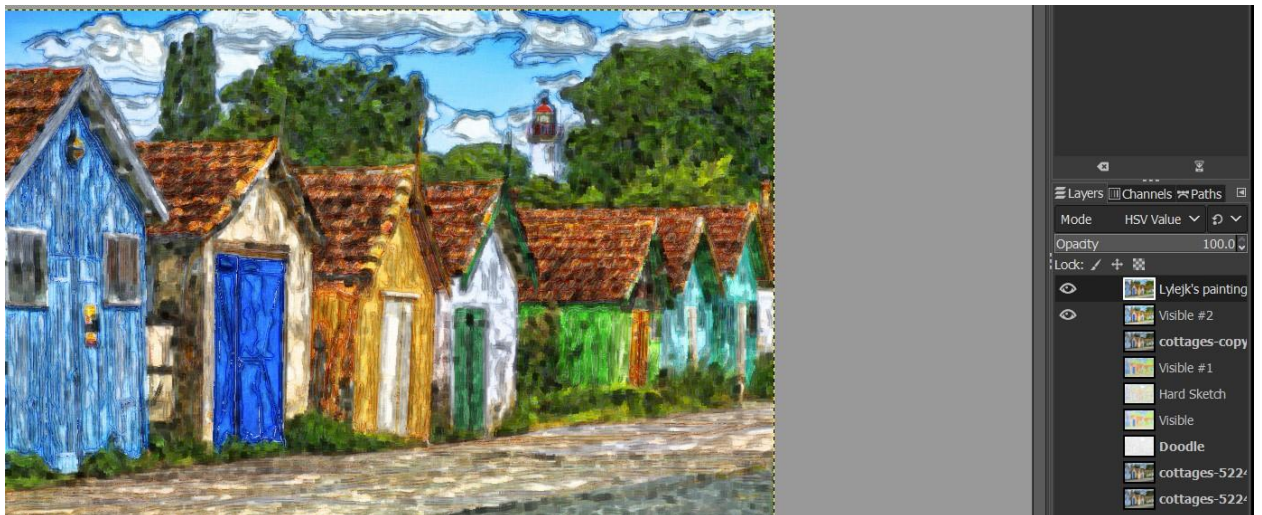
New from Visible

Select Visible 2 layer, go to Gmic – Artistic – Lylejk’s painting.

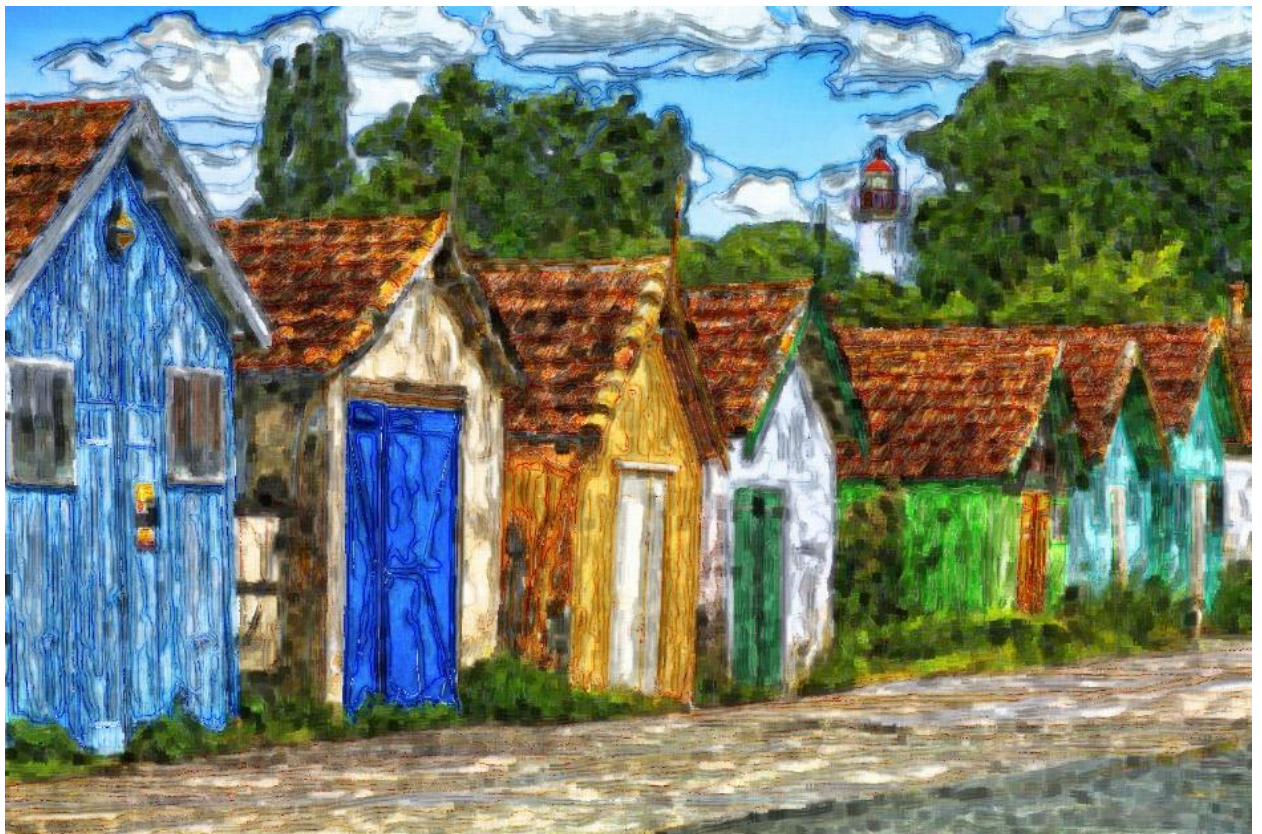


Set the layer at HSV Value





Final Look



Enjoy the process,

Issa