

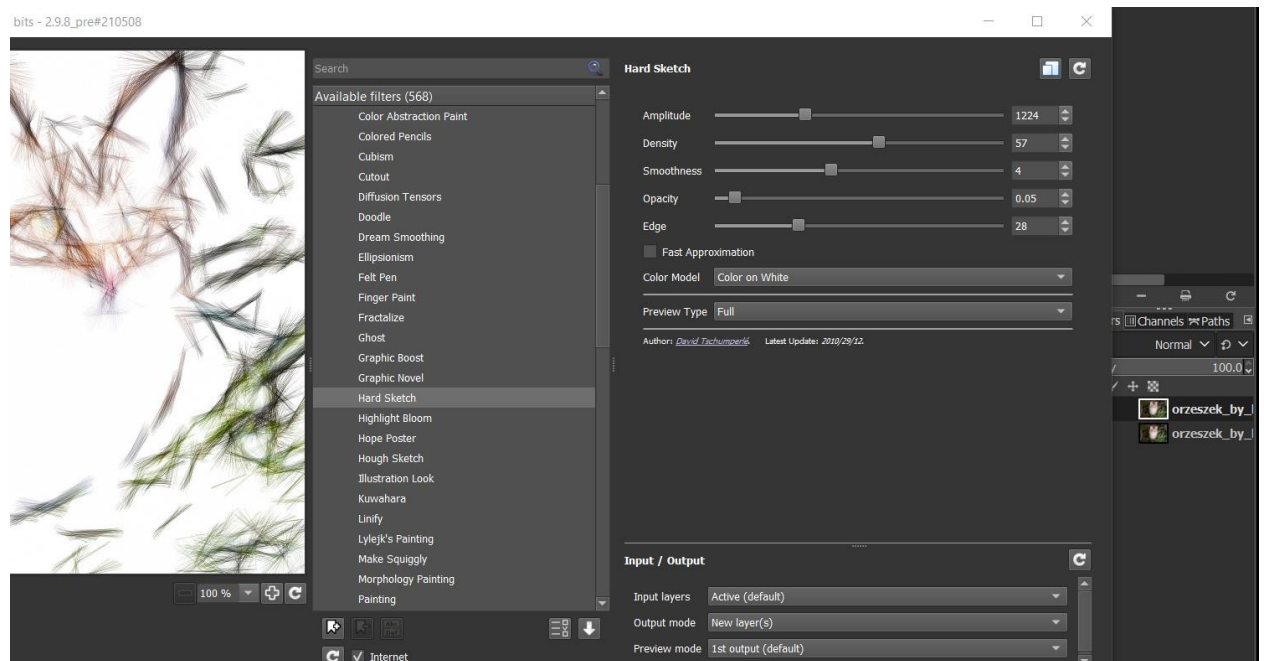
Sketch Graphic Art

Open your image and duplicate it twice

Select layer copy and go to filters- Blur – Gaussian Blur (default)



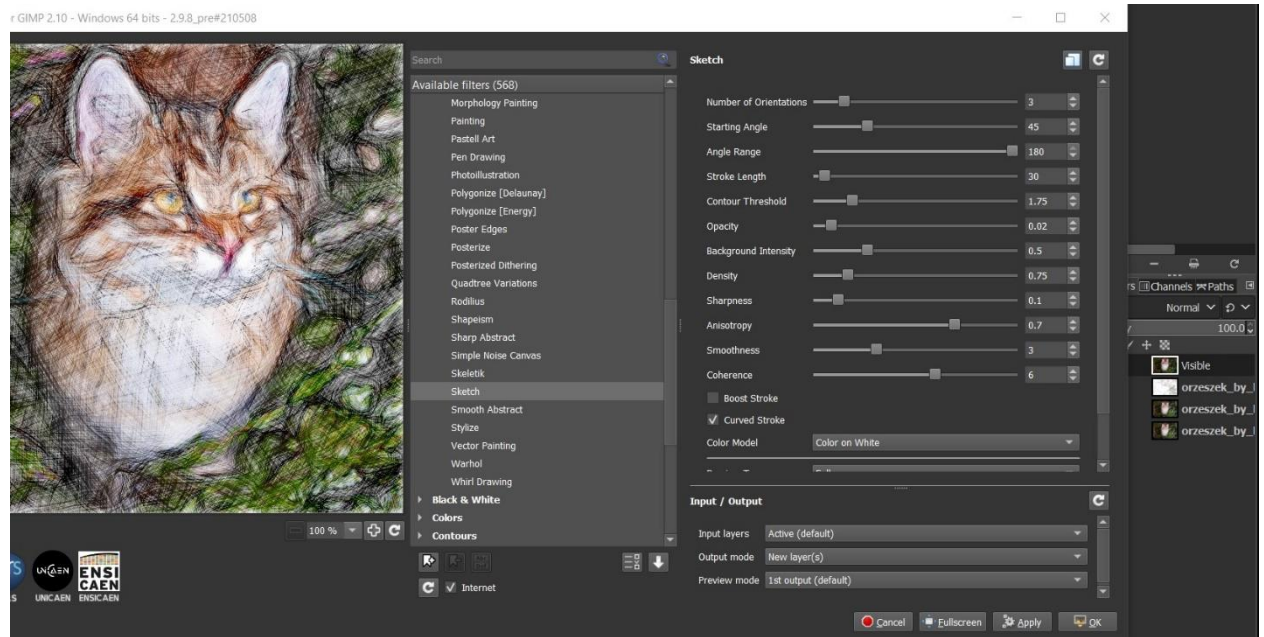
Select blurred layer and go to Filters – GMIC – Artistic – Hard Sketch



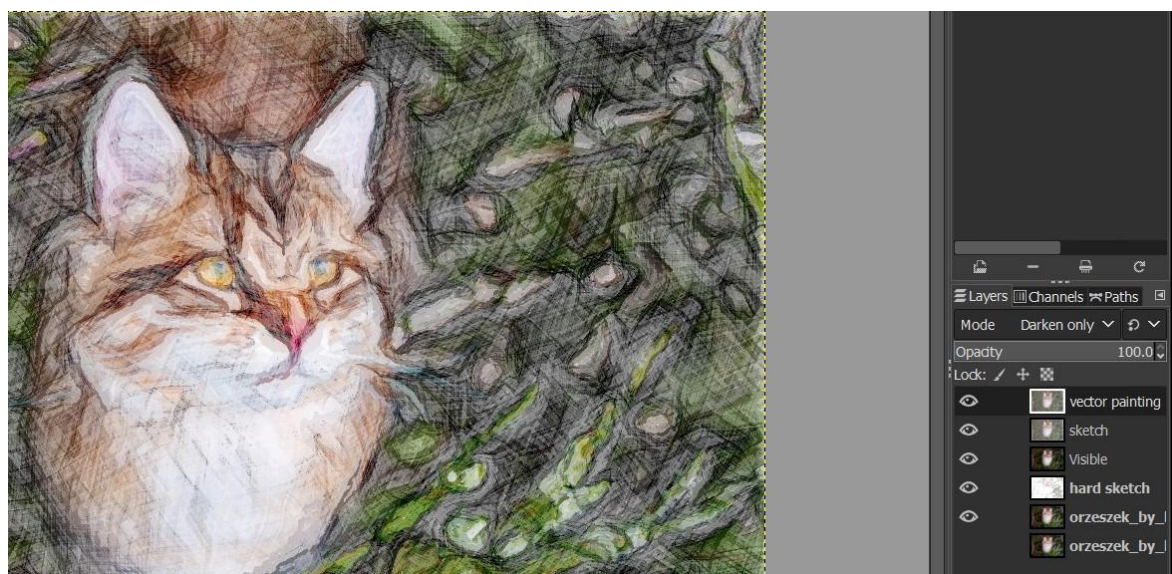
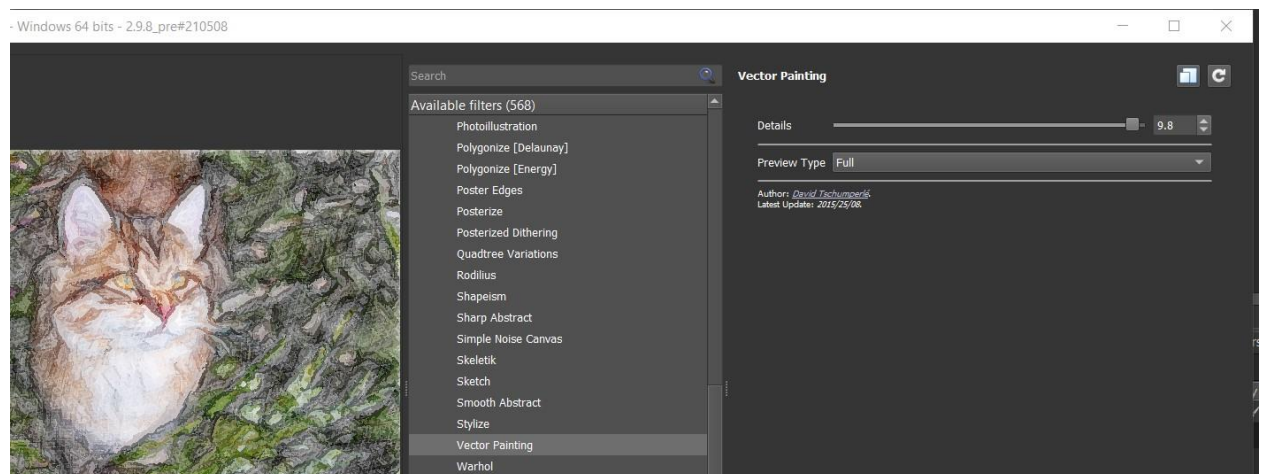
Output to a new layer. Set the layer to Linear Burn.

New from visible

Go to Filters – GMIC – Artistic – Sketch. Output to a new layer



Select ketch Layer and go to GMIC – Artistic – Vector Paint (output to a new layer) Details : 9.8



Set the vector painting layer to Darken only

Result so far



New from visible

Set your original copy upper the layers to Soft Light at 70% opacity

Final Look:



Enjoy the process

Issa