

## Halftone Graphic Art

Open your image and duplicate it twice

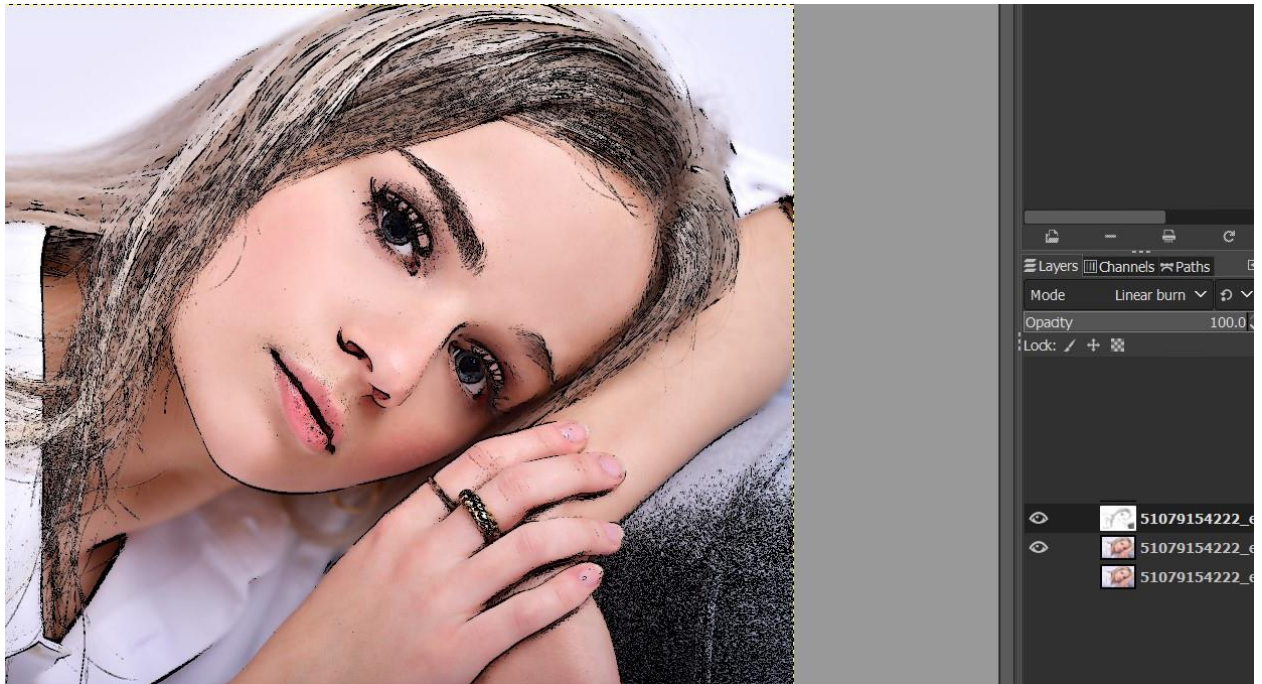
Select the upper layer copy

Go to Filters – Edge-Detect – Edge

Go to Colors – Color – Invert

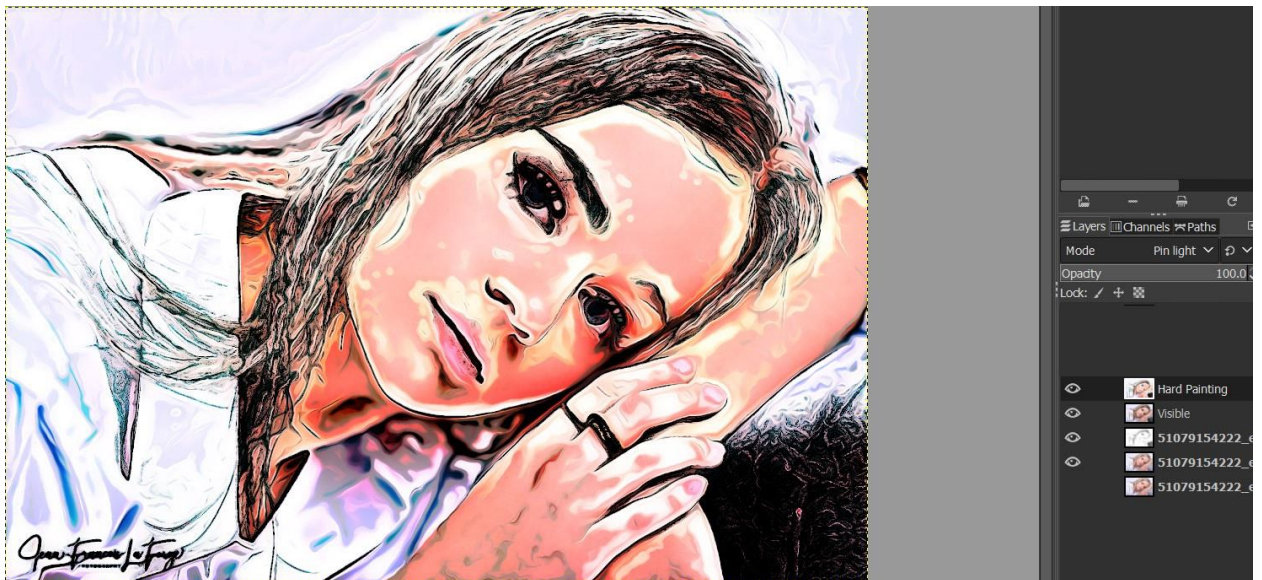
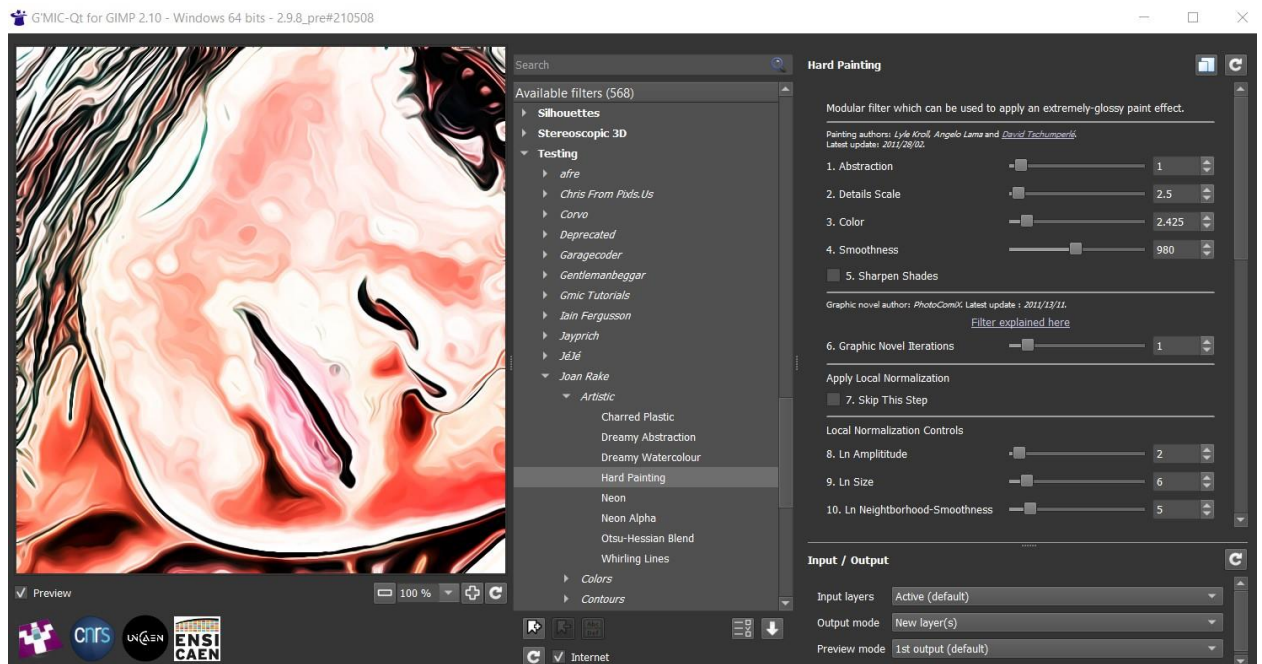
Color – Threshold - Slide the central triangle until you get nice black lines.

Set this layer as Linear Burn



## New from Visible

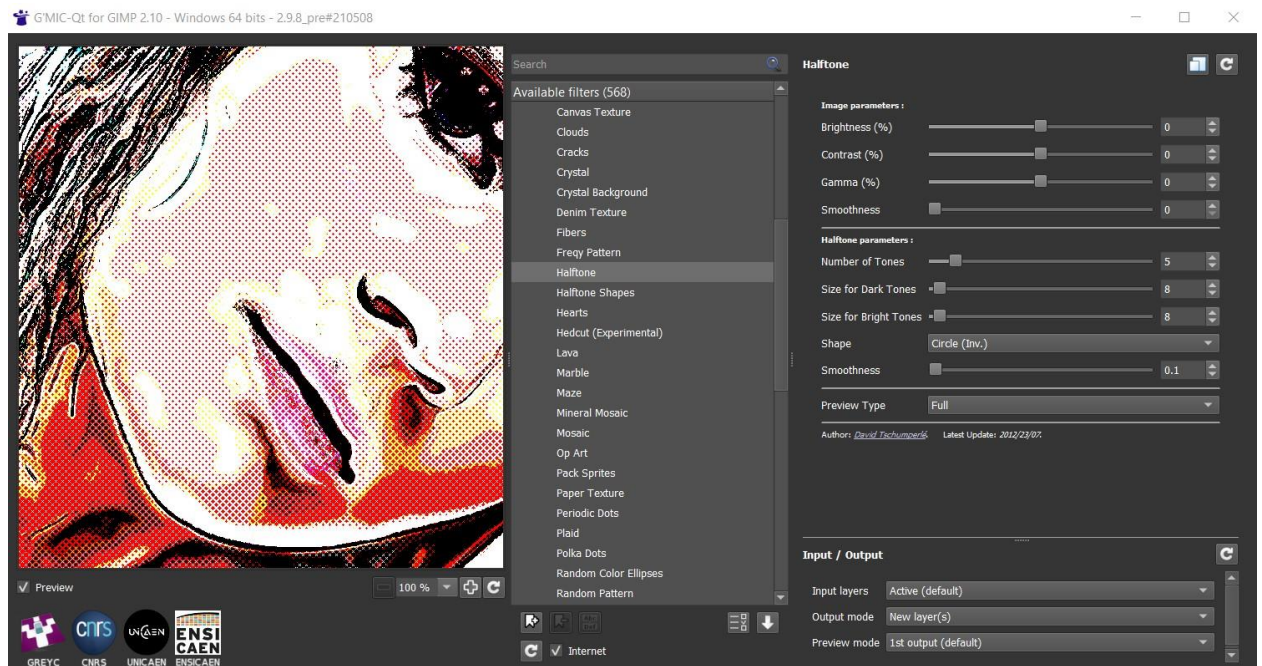
Select Visible layer – Go to Filters – GMIC \_ Testing \_ Joan Rake – Artist – Hard Painting (make sure NO Sharpen Shadows) Output mode to a new Layer. Set the layer as Pin Light.



New from Visible

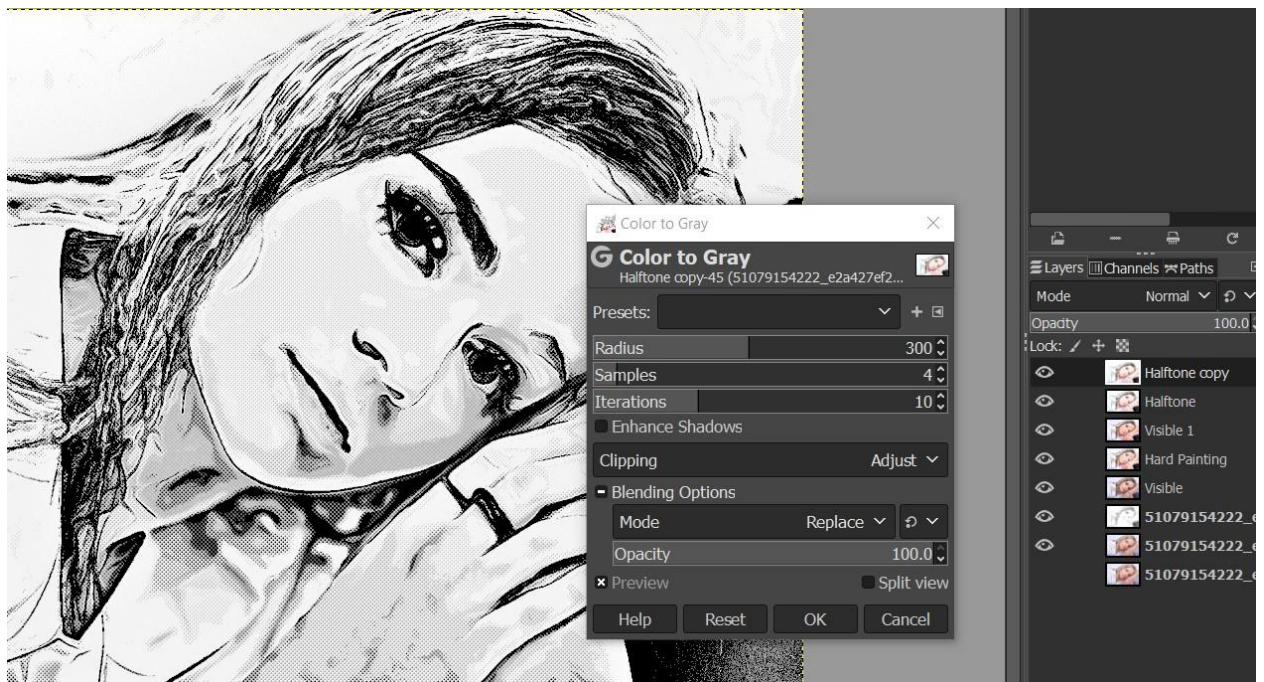
Go to Gmic – Patterns – Halftone. Output mode to a new layer





Set the layer as Linear Light or HSV Value (try more possibilities) Soft Light and more.

You can Duplicate Halftone layer and Go to Colors – Color to Gray. The result is nice too.



Results



